

Bulk Feed

QUANTUM S Outdoor
QUANTUM Outdoor
QUANTUM XL Outdoor
QUANTUM XXL Outdoor
QUANTUM Indoor

Reverse Vending Machines



Making recycling easier.



Built for high-volume returns

The Envipco QUANTUM is designed for locations where return volumes are high and space efficiency matters. Its all-in-one outdoor design enables fast, intuitive recycling without requiring any indoor floor space. By allowing consumers to load unsorted containers directly into the bulk-feed tray, QUANTUM reduces friction at the point of return and keeps queues moving, even at peak times.



QUANTUM combines bulk-feed convenience with advanced recognition and compaction technology.

This allows retailers and operators to process more containers, reduce service frequency, and keep operations efficient and predictable.



Envipco technology

At its core, QUANTUM is powered by a sophisticated technology stack designed for speed, accuracy, and reliability.

This high-performance architecture combines ultrafast cameras for barcode reading and shape recognition with precision metal sensors for material verification.

It ensures operational integrity through advanced fraud prevention and the automatic rejection of partially filled containers and glass bottles.

Once validated, containers are routed with high precision and reliable air jet sorting, ensuring maximum throughput without interruption.



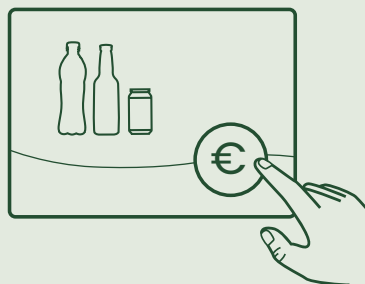
An easy customer journey

Recycling with QUANTUM is designed to be **intuitive, fast, and accessible.**



Insert

Consumers empty their bags directly into the bulk feed tray. No sorting required.



Process

Real-time progress is shown on the screen. Rejected items, such as filled bottles or glass containers are returned via a dedicated chute.



Reward

At the end of the transaction, consumers receive a QR code, paper voucher, or digital payout. Rewards are scannable on screen or via the built-in scanner.

Store more, occupy less

QUANTUM uses Envipco's patented compaction technologies to maximize storage capacity and reduce service frequency.

High compaction rates for PET bottles and cans ensure efficient use of space. Secure devaluation protects container integrity throughout the process.



Storage capacity

All QUANTUM Outdoor machines support standard Euro pallet bins and optional 1100-liter wheelie bins for increased storage. The Quantum Indoor support standard Euro pallet bins.

Euro pallet bins store up to:

- 5000 cans
- 1750 PET bottles
- 2300 mixed PET and cans

Automatic Screed Leveling

The Automatic Screed Leveling evenly distributes the containers across the bins, ensuring efficient use of storage space and avoiding the need for bin shakedown. It works automatically based on filling sensors. It is available for all bin configurations.



Doesn't matter the size. We've got you covered.



QUANTUM S Outdoor

QUANTUM Outdoor



Dimensions (W x D x H)

5220 mm x 2900 mm x 2864 mm

7200 mm x 3010 mm x 2864 mm

Footprint

15,1m²

21,6 m²

Weight

3600kg

3500 kg

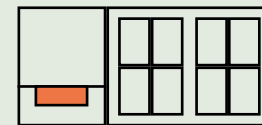
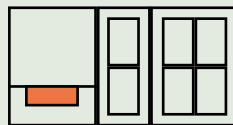
Type of containers

Cans, PET bottles, Commingled cans/PET bottles

Number of bins (Euro pallet size)

6 active bins

8 active bins



Digital and APIs

Everything you need to run QUANTUM digitally, from security to payments.

Enterprise-Grade Security & Compliance

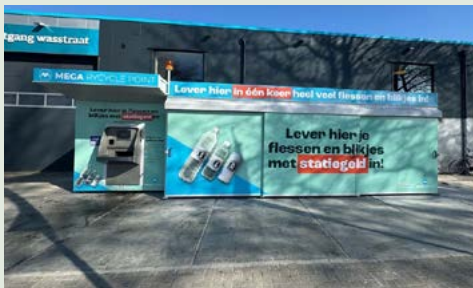
Your data is safeguarded by SOC 2 Type 2 certification and "Privacy by Design" architecture, ensuring rigorous GDPR compliance and operational integrity.

Secure POS Integration

Protect revenue with our POS Desk API. We provide real-time voucher validation to prevent fraud and double-redemption by instantly verifying and "locking" codes during the transaction.

Operations & Fleet Management

Maximize uptime via the enVision ePortal API. Receive real-time alerts (e.g., bin full, printer out of paper) and monitor fleet heartbeat to preemptively address service disruptions.



QUANTUM XL Outdoor

QUANTUM XXL Outdoor

QUANTUM Indoor



9600 mm x 3010 mm x 2864 mm

12000 mm x 3010 mm x 2864 mm

1908 mm x 3700 mm x 2441 mm

28,9 m²

36,1 m²

7,1 m²

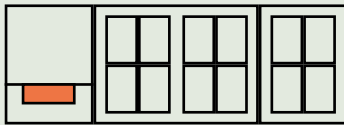
4800 kg

5800 kg

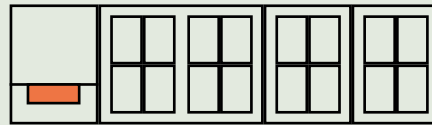
1800 kg

Cans, PET bottles, Commingle cans/PET bottles

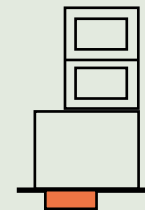
8 active bins
Additional storage compartment
for 4 storage bins



8 active bins
Additional storage compartment
for 8 storage bins



2 active bins



Electronic Payment & Loyalty

Modernize the user experience with dynamic QR codes for digital wallet payouts, direct loyalty card integration for point accrual, and charity donations.



Built for reliable operations

QUANTUM is **designed to keep performing in demanding environments**. Its architecture supports high uptime, predictable operations, and **efficient service** across single locations or large fleets. System monitoring and **automated alerts help operators anticipate issues before they affect daily operations**, reducing downtime and manual intervention.

Outdoor ready design



The QUANTUM Outdoor is engineered for extremes, operating reliably in temperatures from -20°C to +45°C. Its housing features a weather- and corrosion-resistant electrostatic powder finish for maximum durability.

An integrated canopy protects users from rain and snow, while the flexible design easily adapts to custom glass housings or other site-specific enclosures.

Expert support. Anytime. Anywhere.

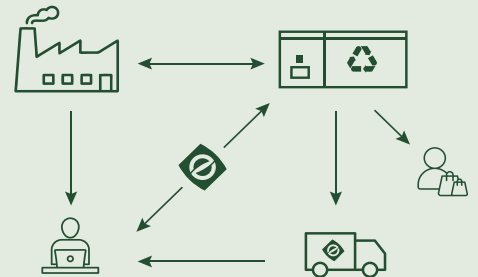


Envipco supports QUANTUM throughout its full lifecycle.

Live field service technicians provide on-site maintenance and rapid issue resolution. Dedicated helpdesk teams offer remote support and specialized assistance. Proactive monitoring enables early intervention and efficient service planning.

Enabling retailers to recycle more

Envipco works as a partner to retailers and operators, connecting DRS requirements with operational reality and consumer experience.



From system design and installation to long-term service, we support the entire process. This helps customers recycle more without adding complexity to daily operations.

Making recycling easier.

Contact us

+ 31 (0) 33 285 1773
www.envipco.com
Envipco Holding N.V.,
Stationsstraat 77,
3811 MH, Amersfoort, The Netherlands

